

# Case Study.

**Client:** Film Editing Suites

**Location:** Fitzrovia, London W1

**Duration:** 8 Weeks



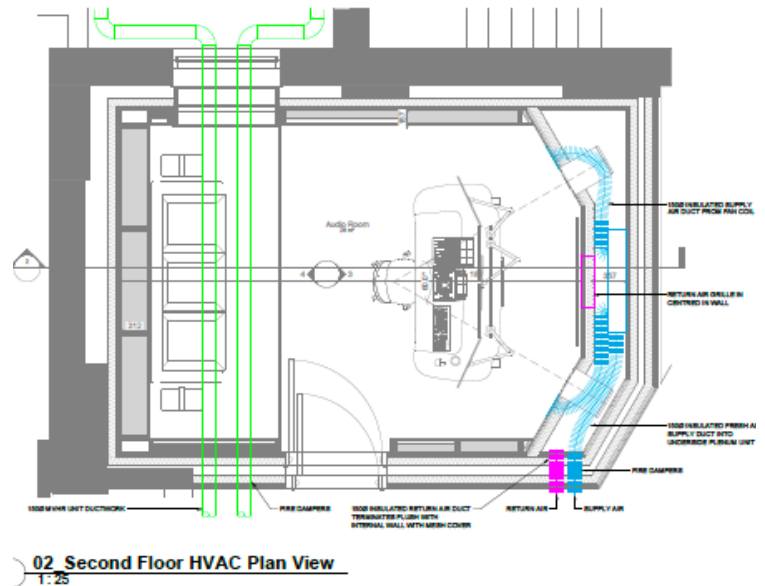
## Film Editing Suites

Working with our existing client, we provided new air conditioning and ventilation solutions to their new editing suites as they expanded to acquire new floors within the building. The project ran in 3 phases, completing one floor at a time, over a 4 month period.

Installation of 5no VRF systems, comprising of 28 indoor units. Each indoor unit capacity differed depending on room size, varying from 2.5-7kw in capacity of cooling/heating. All systems are R32 Mitsubishi heat pump systems wall mounted units to individual studios.

Installation of 3no MVHR ventilation systems  
Installation of 1no Floor standing ducted AC





The biggest challenge was for the main Editing Suite, this was a noise sensitive editing recording suite, so sound transfer was an issue. As this was an internal “room within a room” we also had to provide fresh air and extract to the room for comfort and building compliance. We needed to design a system that was capable of serving the space with year-round temperate control, fresh air and extract with zero sound transfer from the equipment when operating.

We managed this by locating the MVHR ventilation and installing a separate individual Mitsubishi Floor standing ducted AC equipment externally outside of the room and behind a specially built acoustic wall. The equipment was fitted with silencers and extra sound proof insulation around the indoor ducted unit.